

Reading card

No need
to be afraid of the dark
in this house.



Smart House



Taking card



Smart Power Station Smart House

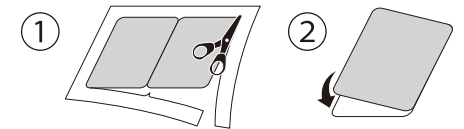
- This system can generate, store, and use electricity.
- The solar panels on the house can generate electricity.
- This electricity can be used at night or in emergency situations.
- The electricity generated by the solar panels can be used without emitting any CO₂.



SEKISUI

① Cut along the frame of the card.

② Fold it in half, and stick it together.



SEKISUI KARUTA 2/12(FFU synthetic wood)

Reading card

Strong and long-lasting –
the trees of the future!



FFU synthetic wood



Taking card



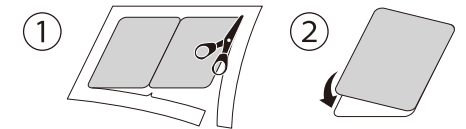
FFU synthetic wood

- A new synthetic wood-like material made from plastic.
- It is strong, lightweight and does not rot.
- A wood substitute that is perfect for numerous uses around town.
- It is long-lasting, so it does not need to be replaced with new materials. Fewer replacements mean less waste.



① Cut along the frame of the card.

② Fold it in half, and stick it together.



SEKISUI KARUTA 3/12(Glass interlayer film)

Reading card

On hot summer days,
a magic film
to cool you down.



Glass interlayer film



Taking card



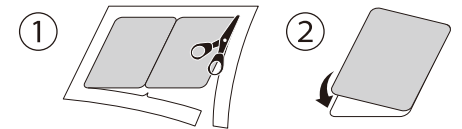
Glass interlayer film

- The interlayer film is a thin film used in glass for cars and buildings.
- Prevents injuries caused by shattered glass.
- Reduces the amount of heat inside vehicles, and makes building interiors more comfortable.
- Makes air-conditioning more effective, reducing energy use.



① Cut along the frame of the card.

② Fold it in half, and stick it together.



Reading card

No more
unhealthy pipes.



SPR Method



Taking card



Extending the life of water pipes

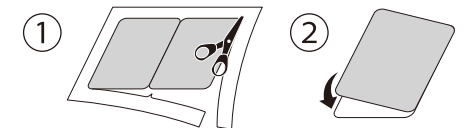
SPR Method

- The SPR Method helps to extend the life of old water pipes buried underneath roads.
- The old, damaged pipe remains in place, while a new plastic pipe is inserted inside to reinforce the old one.
- This method makes it possible to keep using existing pipes, reducing waste.
- There is no need to dig up the road above or dispose of extra soil.



① Cut along the frame of the card.

② Fold it in half, and stick it together.



Reading card

When you feel sick,
we're on the case.

Test Kits
for Infectious Diseases



SDGs Ninja Challenge
SEKISUI
KARUTA

Taking card



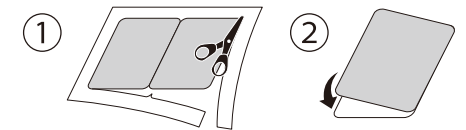
Test Kits for Infectious Diseases

- These products enable swift testing for sicknesses that pass from one person to another, such as influenza and norovirus.
- Hospital staff can conduct a simple check on phlegm, saliva samples and see the results on the spot.
- Enables swift identification and appropriate treatment of sickness.



① Cut along the frame of the card.

② Fold it in half, and stick it together.



SEKISUI KARUTA 6/12(Cross-Wave)

Reading card

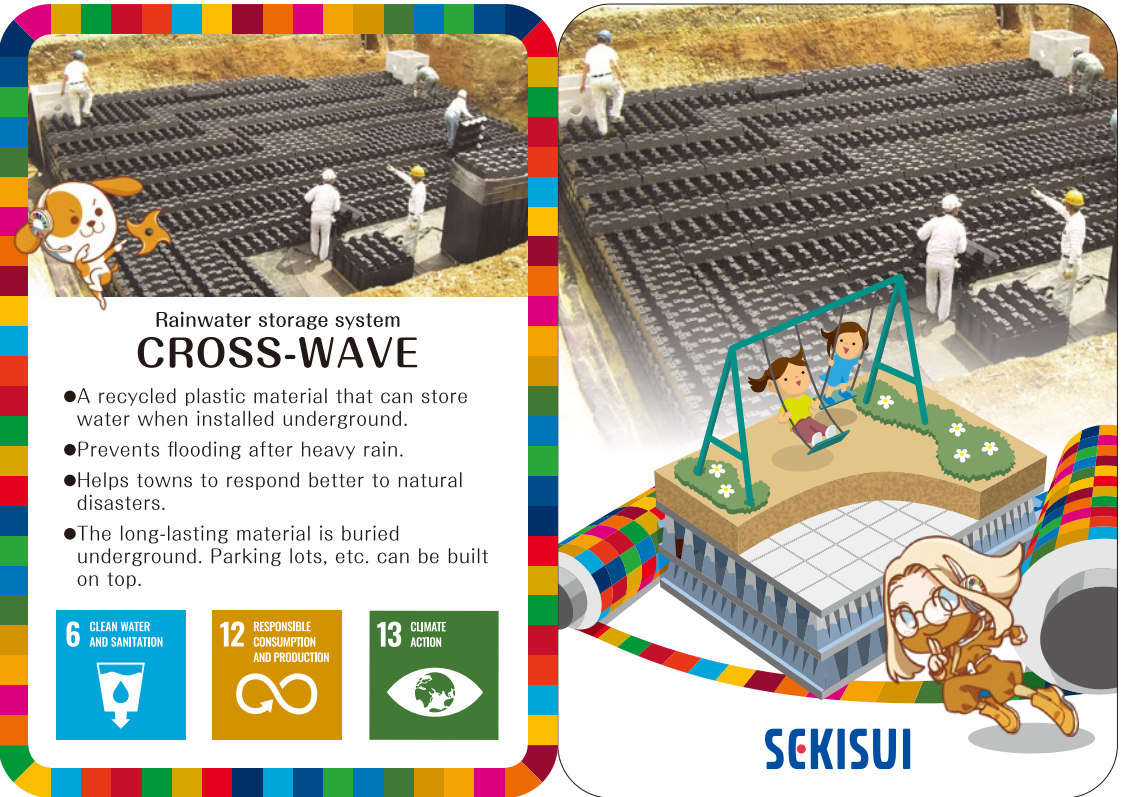
Creeping underground,
stronger than rain,
friend of the town.



Cross-Wave



Taking card



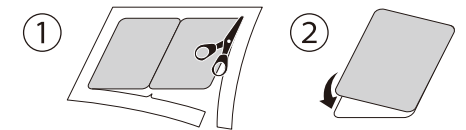
Rainwater storage system
CROSS-WAVE

- A recycled plastic material that can store water when installed underground.
- Prevents flooding after heavy rain.
- Helps towns to respond better to natural disasters.
- The long-lasting material is buried underground. Parking lots, etc. can be built on top.

6 CLEAN WATER AND SANITATION
12 RESPONSIBLE CONSUMPTION AND PRODUCTION
13 CLIMATE ACTION

SEKISUI

- ① Cut along the frame of the card.
- ② Fold it in half, and stick it together.



Reading card

Up in the sky –
it's lighter than air!



KYDEX



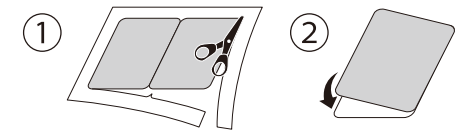
Taking card

Thermoplastic Sheet
KYDEX

- Recyclable plastic sheet that can be used to make aircraft seats, tray tables, etc.
- Lighter and stronger than conventional plastics.
- Sheet made from recyclable plastic.
- Using this plastic in aircraft makes them lighter.

SEKISUI

- ① Cut along the frame of the card.
- ② Fold it in half, and stick it together.



Reading card

It's right
under your feet.



MIGUSA

SDGs Ninja Challenge
SEKISUI
KARUTA

Taking card



Plastic Tatami Mats
MIGUSA

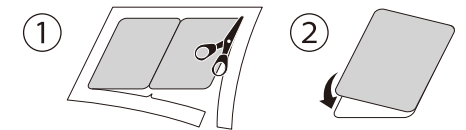
- This new type of tatami mat mixes plastic and natural materials, retaining the characteristics of all-natural mat rush.
- Tatami mats made from strong materials that retain the characteristics of natural mat rush.
- Robust and fade-resistant.
- Comfortable tatami mats resistant to mites and mold.



SEKISUI

① Cut along the frame of the card.

② Fold it in half, and stick it together.

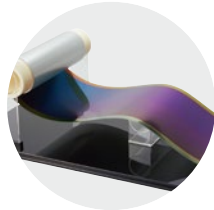


SEKISUI KARUTA 9/12(Film-Type Solar Cells for Outdoor Use)

Reading card

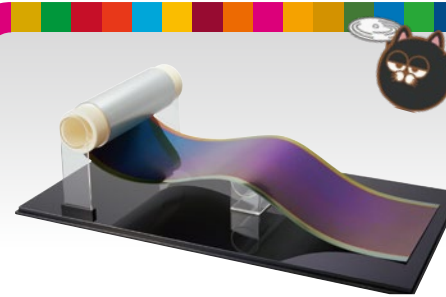
Can you make
a paper airplane?
A paper battery?

Film-Type Solar
Cells for Outdoor Use



SDGs Ninja Challenge
SEKISUI
KARUTA

Taking card

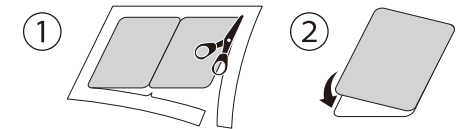


Film-Type Solar Cells for Outdoor Use

- A thin film containing solar cells.
- Able to bend and can be installed on curved surfaces.
- Lightweight and easy to install.
- Can be produced continuously.



- ① Cut along the frame of the card.
- ② Fold it in half, and stick it together.



Reading card

Like a three-legged race,
everyone needs support.



Wells



Taking card

Equipment for Nursing Care
and Independent Living

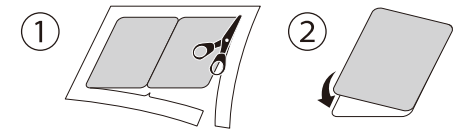
Wells

- Bathroom and toilet fixtures for nursing care.
- Equipment such as doors and handrails can be repositioned according to physical capabilities.
- Helps sick and elderly people with immobile limbs.
- Helps them to independently use the parts of their body they can move.

SEKISUI

① Cut along the frame of the card.

② Fold it in half, and stick it together.



Reading card

It's more fun
with the right
amount of sun.



Airyshade

SDGs Ninja Challenge
SEKISUI
KARUTA

Taking card



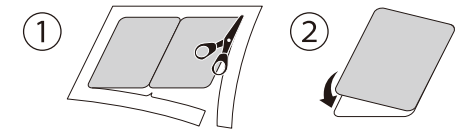
Plastic sunshade
Airyshade

- The overlapping pieces of the sunshade create shade in the same way as leaves on trees.
- The small plastic "leaves" are thin and do not absorb heat.
- The sunshade creates a pleasant, shady area for the people below and prevents the ground temperature from rising.
- The sunshade can be used to prevent the heat island effect in urban areas.



① Cut along the frame of the card.

② Fold it in half, and stick it together.



Reading card

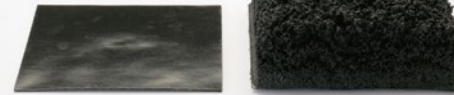
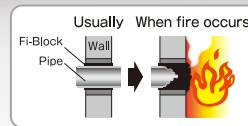
Where's the fire?
Not through here!

Fi-Block



SDGs Ninja Challenge
SEKISUI
KARUTA

Taking card



Fire-resistant material Fi-Block

- A fire resistant material used to prevent fires from spreading
- Fi-Block expands to 10 times its original size when a fire breaks out, and prevents the spread of flames through gaps in buildings such as window edges.
- Safe and easy construction can be as simple as pasting Fi-Block sheet to the area.



① Cut along the frame of the card.

② Fold it in half, and stick it together.

